

# Adhesive Tile Flooring Installation Manual



# Contents List

## Instructions for Use – Polymax Flooring

Please read carefully before using the product.

Disclaimer: Polymax will not accept claims for modified products, including those cut or laid with adhesive. Ensure you check the material upon receipt, confirming it matches your order and is free from visible defects. If unsatisfied, contact our sales team on 01420 474123 before using any product. Once cut or adhered, returns or claims will not be accepted.

### Important Notes:

- Refer to the relevant Installation Guide.
- It is the responsibility of the installer to ensure that the substrate is properly prepared, level, and suitable for the flooring prior to installation. Polymax is not liable for product failure due to unsuitable substrates.
- Polymax will not accept claims arising from damage caused by exposure to direct sunlight, extreme temperatures, or chemicals not compatible with the product.
- Products may vary in finish, size and shade, particularly between different production batches.
- It is not guaranteed that edges of rolled products will be completely straight.
- Patterns or textures may not line up exactly to those of adjoining pieces or rolls.
- It is recommended to install a dirt barrier at entry points to flooring areas.
- Avoid sharp bends during installation. Use cove formers and tread risers where applicable.
- Colour may fade over time.
- Natural rubber based products do not resist oil or grease.

### Liability Disclaimer:

Polymax will not be responsible for any eventuality arising from improper installation, maintenance, or the use of non-Polymax approved materials. Polymax's liability is limited to the cost of the product itself, and we will not be responsible for any consequential or indirect losses resulting from the installation or use of the product.

## Substrates

The first pre-condition to get a good, durable and reliable installation of any resilient flooring is connected to the characteristics of the substrate. Whatever the substrate is constructed from, the installer is responsible for ensuring that the substrate is properly prepared, level, and suitable for the flooring prior to installation, and that any corrective actions are carried out prior to commence the laying of the floor covering.

Where required, we would advise that levelling compound is used on solid floors, and 6mm Marine ply on wooden flooring.

Prior to installation of the floor covering, the substrate should be thoroughly cleaned, with any loose debris removed, and any residual oil grease or any other agent which may impact the effectiveness of the adhesive or installation removed. Once the substrate has been cleaned it is important to ensure that condition is maintained during the installation process.

## Receipt and storage of the flooring material:

These instructions are applicable to all flooring products.

A good installation starts with a proper storage of products:



Check quantity, colour and quality on delivery



Rolls to be stored in upright position



Flooring to be stored in the room where it will be installed for 24 hrs before installation, with a minimum temperature of 18°C

## Tools Required for Installation



Tape Measure



Dust Pan & Brush



Stanley Knife & Spare Blades



Chalk line or Laser Line



Straight Edge



Notched Adhesive Trowel  
(if flooring is being glued)

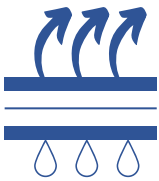
## Conditions to be checked prior to installation



18°C - 30°C  
Room temperature for 24 hrs  
before and after installation



Relative humidity of  
less than 75% in the  
room where flooring  
will be fitted



Max floor moisture of  
2% for glued, and 5%  
for loose lay flooring



Substrate to be crack and  
defect free, with a smooth  
surface, 6mm ply or levelling  
compound can be used to  
achieve the desired surface



The substrate is fully cleaned with any  
debris, grease or oil removed prior to  
installing the flooring

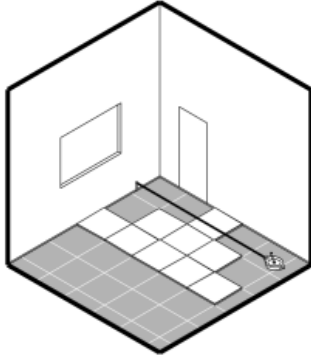
## Adhesive Selector

|                                   | Glue Type               |                         |                           |                         |
|-----------------------------------|-------------------------|-------------------------|---------------------------|-------------------------|
|                                   | Two-part epoxy PU       | Two-part epoxy PU       | Acrylic                   | Contact                 |
| Glue Name                         | G19                     | G20                     | VS90                      | VZ                      |
| Substrates                        |                         |                         |                           |                         |
| Wood                              | ●                       | ●                       | ●                         | ●                       |
| Concrete                          | ●                       | ●                       | ●                         | ●                       |
| Metal                             | ●                       | ●                       |                           |                         |
| Applications                      |                         |                         |                           |                         |
| Wet Area                          | ●                       | ●                       |                           |                         |
| Dry Area                          | ●                       | ●                       | ●                         | ●                       |
| Horizontal                        | ●                       | ●                       | ●                         | ●                       |
| Vertical                          |                         |                         |                           | ●                       |
| Installation Guidance             |                         |                         |                           |                         |
| Setting Time (light foot traffic) | 12 - 24 Hrs             | 12 - 24 Hrs             | 3 - 5 Hrs                 | Immediate               |
| Open Time                         | 50 - 60 Mins            | 40 - 50 Mins            | 20 - 30 Mins              | 12 hrs                  |
| Coverage                          | 2m <sup>2</sup> per 1kg | 3m <sup>2</sup> per 1kg | 200 - 300g/m <sup>2</sup> | 200-300g/m <sup>2</sup> |
| Installation Temp                 | 10°C - 30°C             | 10°C - 30°C             | 15°C - 35°C               | 10°C - 35°C             |

# Installation

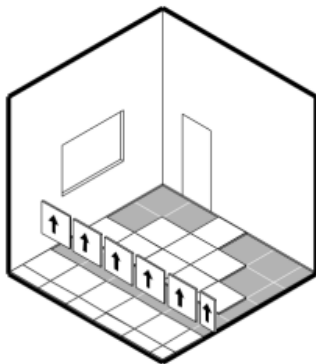
## Setting Out

1. Measure the room and mark the centre lines, plan the laying of the flooring to minimise the number of cuts.

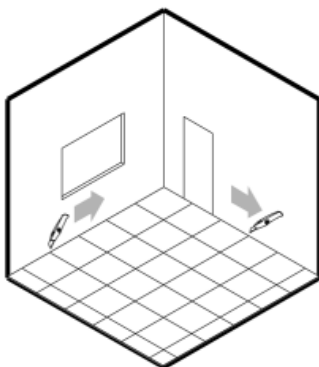


## Fitting

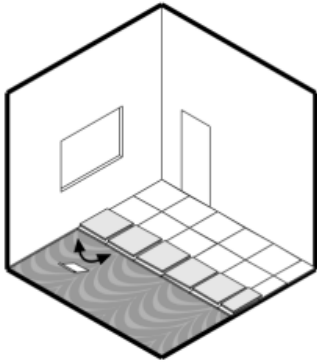
2. Loose lay the rolls (without adhesive) starting along the centre lines and following the arrows printed on the back of the tiles taking special care to the alignment of joints and/or pattern.



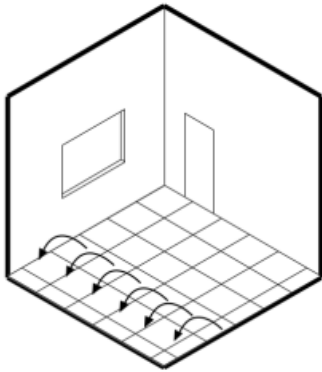
3. The loose laying is important to check the colour uniformity and the absences of defect in the flooring. The perimeter tiles will require to be trimmed off to be ready for bonding.



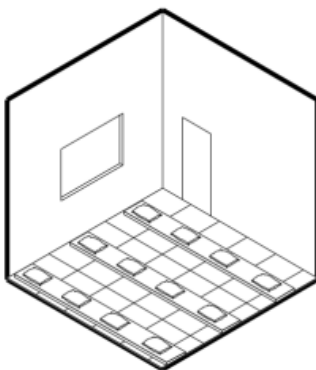
4. Tip over a row of tiles at a time. Spread the adhesive with a notched trowel.



5. Once the adhesive is ready to accept the tiles, put the tiles back in the starting position. Press the tiles firmly into place, making sure that all air is expelled and the tile is in full contact with the substrate.



6. Special care has to be taken with regards to the positioning of the tiles to make sure the alignment of joints and studs is accurate. In case adhesive with long curing times are used, apply weights along the joints.



#### Notes:

The excess adhesive shall be removed as work progresses and it is still wet, using a cloth with a neutral detergent (in case of acrylic adhesive) or wet alcohol for two component adhesives. Avoid making concentrated pressure on the floor with hands, elbows or knee, during the installation to prevent the formation of permanent indents; do not walk on the flooring for at least 24 hours after the installation.

Always protect the floor after the installation with protective sheeting to avoid unnecessary damage when installing further equipment.

## After Care and Cleaning

Once installation has been completed, the tiles may require cleaning.

The reason for this is during the manufacturing process the flooring may have a protective layer applied as a barrier to protect against oil, dirt, and other environmental factors from affecting the flooring in transit.

To remove this, a quick clean using the Polymax Flooring Care Kit (details below) is advised.

### Cleaning Guidelines

It is advised to implement a regular cleaning schedule to ensure a clean, safe, and long life for your flooring.

Every floor and application is different, due to factors like, the amount of traffic, if the flooring is laid in business, public building or residence, as a result it is important to establish a customised approach to cleaning the floor. However, as a minimum we would recommend:

**Daily:** Brush/Sweep up debris, spot clean spills and stains

**Weekly:** Damp Mop, with a suitable cleaner, always check the manufacturers guideline to ensure the cleaner is suitable for the flooring. Ensure that all excess water is removed.

**Periodically:** Perform a Deep Clean, This can be undertaken by using the Polymax Floor Care Kit (details below), alternatively by using a floor cleaning machine. Prior to commencing it is important to ensure that the cleaning liquid is suitable for the floor covering. For studded and raised flooring you may need to use a studded rubber floor brush to achieve the best result. This type of brush has two bristle lengths to reach the upper and lower levels of the flooring.

Should you wish to restore a sheen to your rubber flooring, using a professional grade buffing machine. Select a machine ensuring that it has settings to operate at less than and up to 350rpm, which is the upper limit for buffing without risking damage to the floor.

## Polymax Floor Care Kit

### Stage 1 – Prepare Floor Polish Stripper

Prepare is a rinse free stripper which will save up to 50% labour time throughout the stripping process as it dries without leaving a film or residue. The advance soil suspension system and low foaming formulation means quick and easy recovery and pick up.

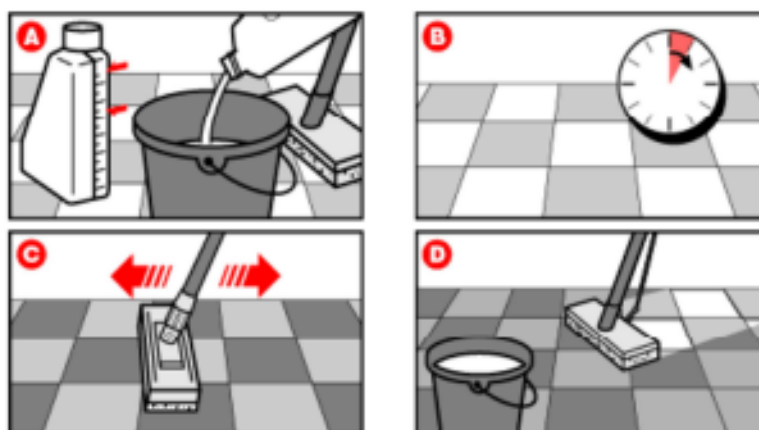
Preparation: Before using Prepare you should sweep the floor with a soft brush.

A: Dilute Prepare approximately 1:4 (Prepare: Water) for normal use in a bucket (One litre of Prepare, with this dilution, will approximately cover 300m<sup>2</sup>). Spread the solution liberally over the floor with a mop.

B: Leave to work for approximately 5-10minutes.

C: Scrub the floor with the green applicator and white pad.

D: Allow the floor to dry. No rinsing necessary.



### Stage 2 – Protect Acrylic Floor Sealer

This incredibly tough floor polish is ideal for fast drying and low maintenance situations. Protect produces a beautiful, long lasting shine that resists black marking and scuffing. Protect will not discolour even the lightest floors. The deep shine that is produced also has excellent slip resistance.

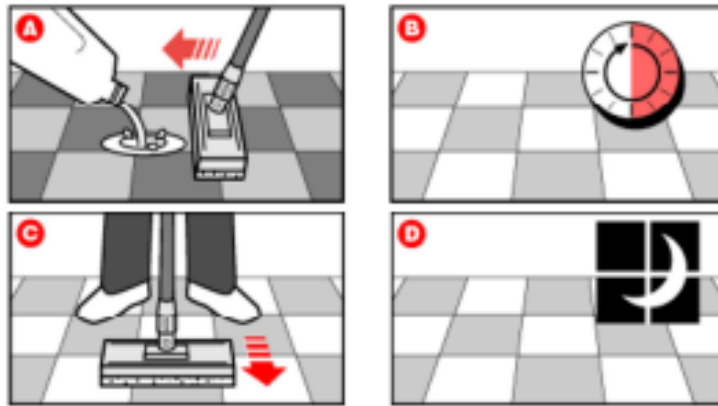
Make sure stage 1 has been completed and the floor is completely dry.

A: Apply a thin and even coat of protect using the green applicator and white pad in one direction. (One litre of Protect covers up to 75m<sup>2</sup>).

B: Leave the coat to dry for approximately 30minutes.

C: Then repeat the process in the transverse direction. Additional coats are recommended for added gloss and protection. For the best result use 2 coats of protect.

D: Leave to dry without walking on the surface for at least 6 hours or preferably overnight.



### Stage 3 – Prolong Flooring Maintainer

Floor maintainer has a neutral pH and will not harm or bluish emulsion polish films. It is a clear bright blue free flowing liquid with a refreshing mint fragrance. It is used for cleaning and maintaining polished floor surfaces with the green applicator and white pad leaving a clean shine.

A: Loose soil & debris should be swept or vacuumed from the floor prior to cleaning with Prolong. The low foaming product should be diluted at approximately 1:10 (Prolong: Water), into a bucket, for mopping lightly soiled floors (One Litre of Prolong, with dilution, will approximately cover 750m<sup>2</sup>).

B: Keeping the mop damp, not wet, mop over the entire floor area.

C: Leave to dry.

